



Quick Reference Card

Working with the Asset Tracker AT1 Device

OVERVIEW

The AT1 device provides you with ongoing visibility on the location of your high-value assets, thus giving you reassurance that they are safe and secure. The AT1 is manufactured by BeWhere and the device reports to their servers. Fleet Complete uses an API service to pull data to display the information in the Fleet Complete application.

It supports the following sensors:

- Battery Level,
- Temperature (ambient),
- Barometric Pressure (ambient),
- Light (ambient) and
- Humidity (ambient).

KEY BENEFITS

- Operates on the LTE-M (5G) low power network
- One of the market's smallest and most affordable asset trackers
- Captures humidity, temperature, light and impact stats
- Applicable to any non-powered device
- Quick and easy install
- Easy to disguise and install covertly

AT1 MODELS

Fleet Complete offers two types of AT1 devices

AT1b (Battery Powered)

- Uses two high end (Ultimate Lithium) AA batteries
- Up to 5-year battery life with 1 ping a day or 2200 snapshots on a full charge
- Wakes up on the scheduled Device Data Settings (DDS), interval to transmit location and sensor data, and then returns to sleep mode
- Option to enable motion detection from the Device Data Settings module

Note: If an area does not have LTE coverage there is no LTE-M coverage available.

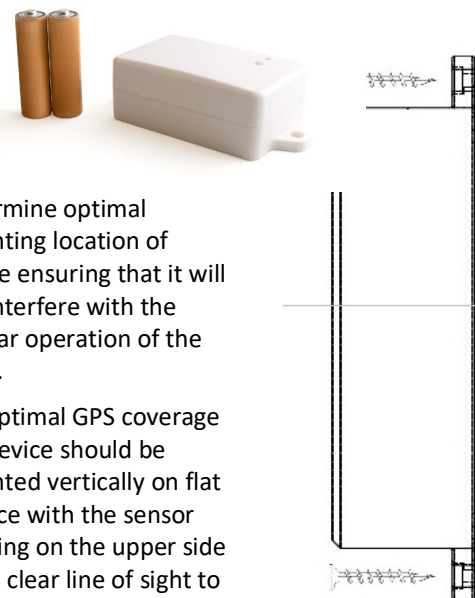


AT1s (Solar Powered)

- Runs on LTE-M, low power network
- One of the market's smallest and most affordable asset trackers
- Captures humidity, temperature, light and impact stats
- Applicable to any non-powered device
- Quick and easy install
- Easy to disguise and install covertly

INSTALLING THE AT1

Model: B1-MIOT-NA



1. Determine optimal mounting location of device ensuring that it will not interfere with the regular operation of the asset.
2. For optimal GPS coverage the device should be mounted vertically on flat surface with the sensor opening on the upper side and a clear line of sight to sky.



Quick Reference Card

- Use two self-tapping screws to mount the device on a flat mounting surface.

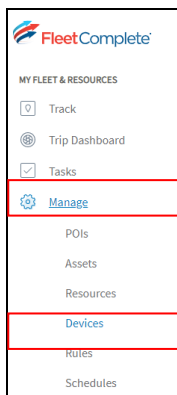
Notes:

- Do not overtighten the self-tapping screws as they will crack the base.
- Avoid mounting the device under heavy metal as this will reduce range and effectiveness of GPS and cellular transmission.
- Zip ties or 3M double-backed tape can be used in interior or non-permanent installations.

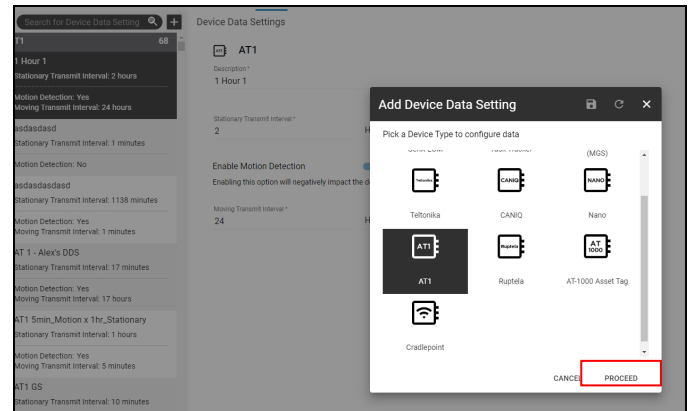
CONFIGURING DEVICE DATA SETTINGS FOR AT1

To configure the AT1 you can modify the Device Data settings (DDS) on FC Web. This allows Users to update the values for Stationary Transmit Interval, Enable Motion Detection, and Moving Transmit Interval.

- Log in to **Fleet Complete Web**
- From the main toolbar, click **Manage**
- Then select **Devices**



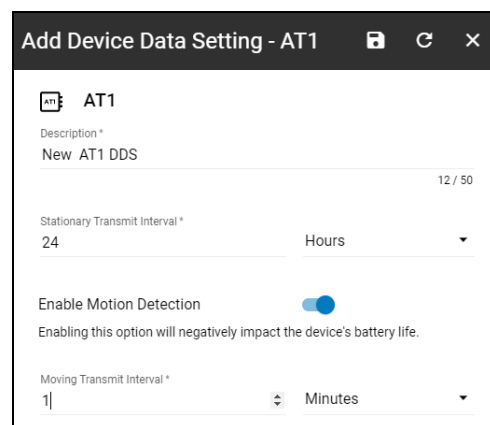
- From the **Device Data Settings** screen, click the black **Add button (+)** in the top left-hand corner
- From the **Add Device Data Setting** window, select the appropriate Device, for e.g.: AT1
- Click the **Proceed** button



- On the **Device Data Settings** screen update the following sections as necessary:

- Enter a Name for the Setting in the **Description** field
- In the **Stationary Transmit interval** section, update the interval time, as necessary
Note: the default is set to **One** snapshot position every 24 hours when the device is not in motion
- To capture **Motion Detection**, slide the **Enable Motion Detection** bar to the right.
- Update the **Moving Transmit Interval** fields, as necessary
Note: the default is set to **One** snapshot position every 1 hour when the device is in motion-

- Click the **Save** button



- Alternatively, to update an existing DDS from the left-hand panel on the Device Data Settings screen, click the name of the setting to view its corresponding information on the right-hand side of the screen.



Quick Reference Card

10. Follow steps 7 and 8 to make any changes, as necessary

RECOMMENDED RULES

The following recommended rules can be assigned to your AT1 device to notify you of any changes:

Analog	Battery Bad/Good™ Settings – 300 ping Is used to determine when an asset sensor reading is outside of a specified range.
Temperature	Is used with a temperature sensor to inform you about when the temperate is outside of a specific range.
Distance (only in Desktop)	Is used to determine when an asset moves beyond a specified extent or amount of space.

RECOMMENDED REPORTS

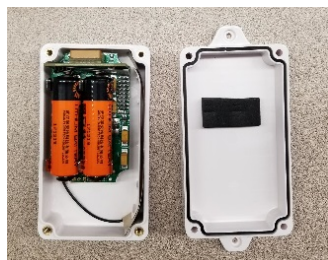
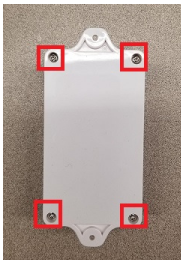
The following recommend reports can be scheduled or generated on demand for your AT1 device to help you gather information from the field:

Asset Temperature Report	Provides the temperature readings within a given time period.
Breadcrumb Trail	Is a summary that is available from the Tracking screen's right-click menu for a specified asset.

BATTERY REPLACEMENT

Caution: Only AA 3.6 V batteries can be used as replacement batteries on this device.

1. Carefully separate top and bottom covers by removing the 4 enclosure screws on the back of the device.



2. Remove the 2 AA 3.6 V batteries from device.

3. Wait 30 seconds.



4. Replace the batteries ensuring that they are placed properly--match the + and - outlined on device board with the + and - on your batteries.

5. After replacing the batteries, a brief led will turn on to indicate the device is powered up.

6. Replace the top cover and ensure top and bottom are aligned before closing the device and securing with screws.

